



HIGHEST QUALITY
LOWEST PRICES
TRADE ONLY SUPPLY

NEW RELEASE SCREENING SYSTEMS

Advantages of Glass Outlet



Trade only supplier

Our focus is providing complete solutions to the trade only. This clear focus allows us to provide the best customer service & quality products to the trade.



High quality products

We pride ourselves on attention to detail in all aspects of sourcing and supplying products. We look domestically and worldwide for factories with the skills and equipment capable of manufacturing the highest quality product at a competitive price. Our quality control team regularly visits our factories to ensure our high standards are always being met.



Lowest price guarantee

Having regard to the costs of sophisticated sourcing, quality control management, operating distribution facilities & providing the best customer service, we pass on the lowest prices possible. We believe that complimentary business can only be achieved when we operate under this discipline.



One stop shop

To save you time, we aim to provide complete systems at one purchase destination with the best price. Being a one stop shop also enables us to control the quality of the whole system.



Delivery to your door

With multiple distribution centres across the country with products in stock & dedicated delivery trucks, we aim to provide fast delivery every time. As well as utilising our own trucks, we've developed strong relationships with key transport providers across Australia so we can deliver even when the job is not so close to home.



Easy installation

We design products with installation considerations in mind to ensure they are as easy to install as possible to save you time on site. Many products offered have handy installation advantages built in.





Simple & stylish

Slat screening is a dynamic aluminium screening solution which provides privacy and shading. With four distinctive range options available, we have everything you're looking for.

All of our slat screening systems offer huge benefits like fast assembly and hidden fixings, providing the easiest and best looking slat screening systems on the market.



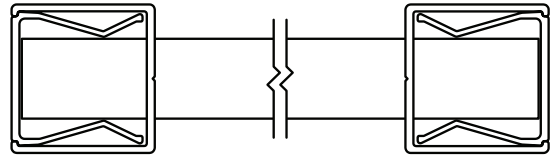
XPRESSSCREENS

The ultimate in complete screening systems, the Xpresscreens system is a patented screen assembly system where screws, welds or rivets are not required for assembling slats to side frames.

Utilising 9mm or 20mm spacing with a 65x16.5mm slat, the Xpresscreens system allows for fast assembly of powder coated screens onsite or in a factory. With 5 popular colours in stock plus mill finish, this system includes slat panels and non-weld gates. Australia's premier screening system is now available!

Available in long length supply or cut to size by us.

Patented system!



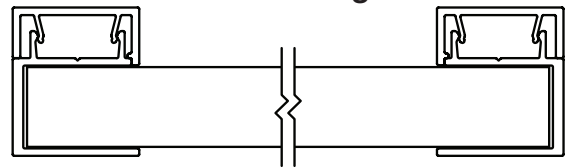
QUICKSCREEN

Our Quickscreen range includes all slats, side frames, screws and spacer blocks required to make a top quality slat screen in one flat packed box.

Available in 4 popular Interpon powder coat colours, this range is budget focused while maintaining superb trade quality. Importantly, all screws are hidden for that sleek finish.

Additionally, patented non-weld flat packed pedestrian gates are available which are easily height and width adjustable.

Hidden fixings!



lifestyle SCREENING

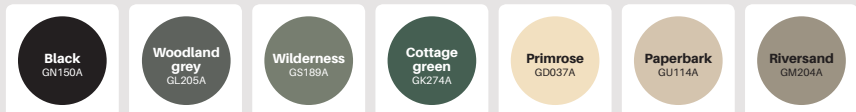
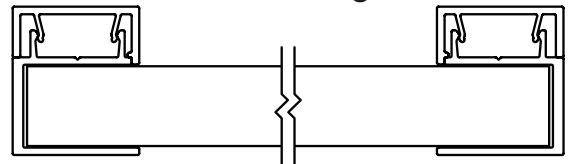
Lifestyle screening is ideal for fencing between pillars and posts.

An extremely versatile width and height adjustable system with 65mm x 16.5mm slats featuring genuine Australian Interpon powder coat available in 7 colours.

Lifestyle screening is essentially our Quickscreen range in component form.

Available in long length supply or cut to size by us.

Hidden fixings!



ALUMAWOOD

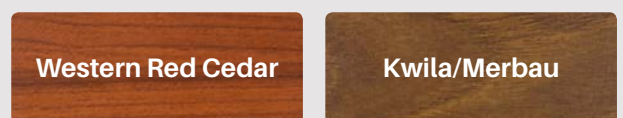
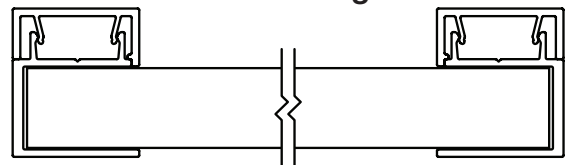
ALUMINIUM SCREENING · TIMBER IMAGED

An extremely cost effective timber image aluminium screening system with no compromise on quality. Interpon base coat is used on all extrusions coupled with genuine Italian image film.

This new system allows for flexibility of slat spacing and easy install. This gives you the choice whether to assemble onsite or pre-assemble panels and gates prior to install.

Available in long length supply or cut to size by us.

Hidden fixings!



Screening extrusions

Interpon D1000 powdercoat colour guide

B	Black (Satin) GN150A	S	Palladium Silver GY184C
MN	Monument (Matt) GL229A	SM	Surfmist (Matt) GA236A
G	Woodland Grey (Matt) GL205A	M	Mill finish



Slat options suitable for Xpressscreen & Quickscreen

Profile	Description	Length	Code	Colours
	65mm x 16.5mm slat with centre web	6100mm	XP-6100-S65	B, G, M, S, SM, MN
	65mm x 16.5mm econoslat with no centre web	5800mm	XP-S65-ECONO	M
	65mm x 16.5mm slat gate blade with centre web and 2x screw flutes	4000mm	XP-4000-GB65	B, G, M, S, SM, MN

XPRESSSCREENS

Introducing Australia's leading slat screening system developed with the trade in mind. Slats simply push into precision machined patented side frames and are held in position. Fast, simple, effective.

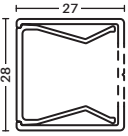
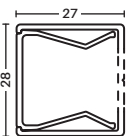
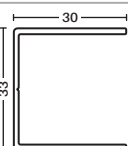
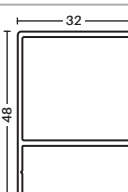
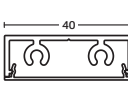
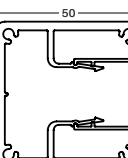
- Complete slat system including panels & gates with matching caps & accessories
- Patented framing system for panels and gates means no requirement for welding, riveting or screwing off every slat. 9mm or 20mm slat spacing available with 65x16.5mm slats.
- Make panels and gates out of powder coated lengths onsite or at a factory premises
- Genuine Australian Interpon powder coat and 5 popular colour finishes in stock at the absolute best prices
- Fast assembly saves you time and money
- Available in long lengths or we can cut panels and gates to size



Screening extrusions

Xpresscreen extrusions

Important note: Xpress Screen side frames are manufactured to suit the XpressScreen slats which are 65x16.5mm. Slat from other suppliers may be 65x16mm which may not be compatible having regard to extrusion tolerances. If using other supplier's slat, please do so at own risk.

Profile	Description	Length	Code	Colours
	28mm x 27mm patented side frame slotted with 9mm space	5800mm	XP-5800-SF09	B, G, M, S, SM, MN
	28mm x 27mm patented side frame slotted with 20mm space	5800mm	XP-5800-SF20	B, G, M, S, SM, MN
	33mm x 30mm U channel	5800mm	XP-5800-U	B, G, M, S, SM, MN
	48mm x 32mm F section	5800mm	XP-5800-F	B, G, M, S, SM, MN
	40mm x 14mm slimline centre support rail with concealed fixing cover (supplied as 2 parts nested together)	5800mm	XP-5800-CSR	B, G, M, S, SM, MN
	50x50mm patented heavy duty side frame with 9mm or 20mm space	5800mm	XP-5800-HDSF09 OR XP-5800-HDSF20	M

Xpresscreen accessories



Side frame cap

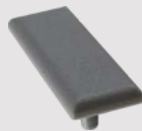
UV stabilised nylon

Colours:
B, G, S, SM, MN

Order Code:

[XP-SFC](#)

Suits Xpresscreen side frames



Centre support rail cap

UV stabilised nylon

Colours:
B, G, S, SM, MN

Order Code:

[XP-CSRC](#)

Suits Xpresscreen centre support rail



Centre support rail top/bottom plate

Aluminium

Colours:
B, G, M, S, SM, MN

Order Code:

[XP-BTP](#)

Used to brace off centre support rail top and/or bottom if needed



Self drilling wafer head screw - 100pk

Colours:
B, G, S, M, SM, MN

Order Code:

[XP-SCREWS](#)

Colour matched heads

Use to fix off side frames with U or F section



Slat comb

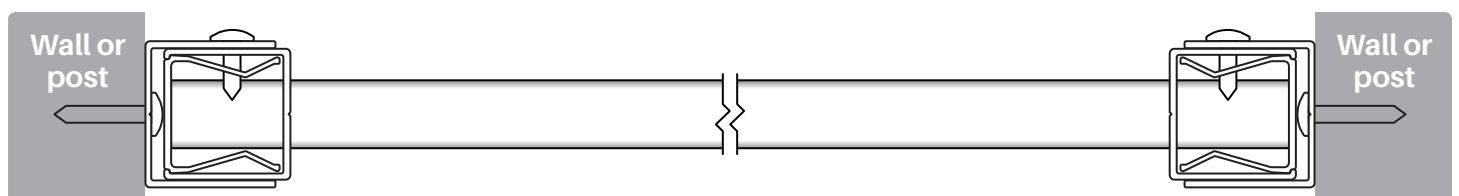
Order Code:

[XP-TOOL-09](#) (9mm)

[XP-TOOL-20](#) (20mm)

Assists with lining up slat for quick side frame assembly

Plan view of slat assembly into patented Xpresscreen side frame



Screening extrusions

Quickscreen extrusions

The Quickscreen system is extremely cost effective. Each slat is screwed off once in position. The system allows for variable slat spacing so any gap is achievable. Once slats are screwed off, a snap on cover hides the fixings to provide a seamless finish.

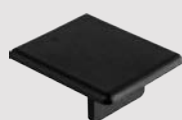
Generally the side frame is screwed directly to a post or wall without need of another U channel or angle.

In 'void' situations where slats cannot be fed in from top down, an F section is available. The F section can also be used where it is preferred to pre-make complete panels in a factory and simply install on site.

For raking panels/angles, slats can be cut at an angle and screwed off making Quickscreen an ideal solution for difficult installations.

Profile	Description	Length	Code	Colours
	26mm x 27mm side frame	5800mm	QS-5800-SF	B, G, M, S, SM, MN
	11.5mm x 25mm Snap on concealed fixing cover (mates with QS-5800-SF)	5800mm	QS-5800-CFC	B, G, M, S, SM, MN
	50mm x 35mm F section	5800mm	QS-5800-F	B, G, M, S, SM, MN
	40mm x 14mm slimline centre support rail with concealed fixing cover (supplied as 2 parts nested together)	5800mm	XP-5800-CSR	B, G, M, S, SM, MN

Quickscreen accessories



Side frame cap

UV stabilised nylon

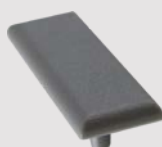
Colours:

Black

Order Code:

QS-SFC-B

Suits Quickscreen side frame



Centre support rail cap

UV stabilised nylon

Colours:

B, G, S, SM, MN

Order Code:

XP-CSRC



Centre support rail top/bottom plate

Aluminium

Colours:

B, G, M, S, SM, MN

Order Code:

XP-BTP

Used to brace off centre support rail top and/or bottom if needed



Quickscreen kit

Spacer blocks provide 9mm,

15mm or 20mm gap options

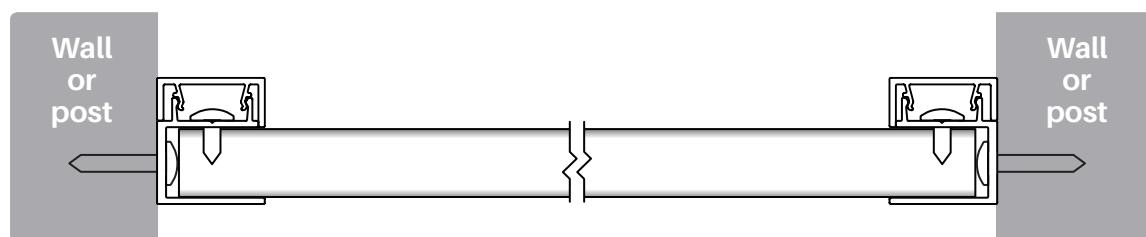
50x 10Gx18mm screws

& 10x spacers

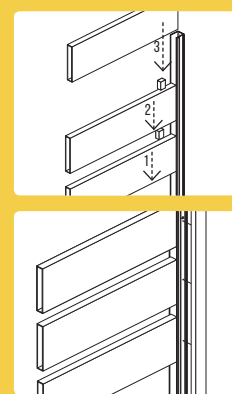
Order Code:

QS-KIT

Plan view of slat assembly into Quickscreen side frame



Easy installation!



Screening extrusions

Gate extrusions

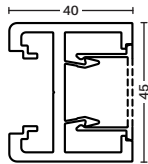
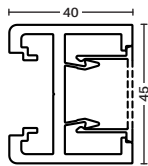
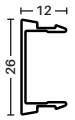
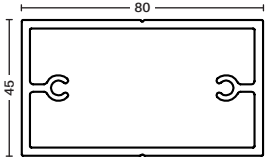
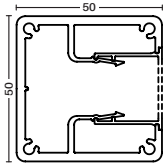
The patented XpressScreen system has revolutionised pedestrian gate manufacture. By utilising screw fluted 65x16.5mm slats screwed off at strategic positions, in conjunction with the 40x45mm patented gate side frames, there is no longer a need to weld pedestrian gates. A select number of screw fluted 'gate slats' are required top, middle and bottom with the balance of standard slats simply pushed into the patented side frames.

Gate side frames come with precision drilled holes along the entire extrusion length so gate blades can be affixed at any position.

The screw fixings into the 'gate blades' are hidden by a side snap-in gate insert.

Patented gate side frame allows easy alignment between gates and panels.

Side frames and slats can be pre-powder coated and assembled onsite or in a factory. It's so fast and easy!

Profile	Description	Length	Code	Colours
	45mm x 40mm patented gate side frame slotted & machined for 9mm space	4200mm	XP-4200-GSF09	B, G, M, S, SM, MN
	45mm x 40mm patented gate side frame slotted & machined for 20mm space	4200mm	XP-4200-GSF20	B, G, M, S, SM, MN
	26mm x 12mm snap in gate insert	4200mm	XP-4200-GI	B, G, M, S, SM, MN
	80mm x 45mm heavy duty top/ bottom rail (for wide gates) *Suggested when gate is over 1500mm wide use top and bottom	4200mm	XP-4200-HDTBR	B, G, M, S, SM, MN
	50x50mm patented heavy duty side frame with 9mm or 20mm space *Ideal for gate side frames when manufacturing welded sliding gates	5800mm	XP-5800-HDSF09 OR XP-5800-HDSF20	M

Gate accessories



Gate frame cap
UV stabilised nylon
Colours:
B, G, S, SM, MN
Order Code:
XP-GFC
Suits Xpressscreen gate frame

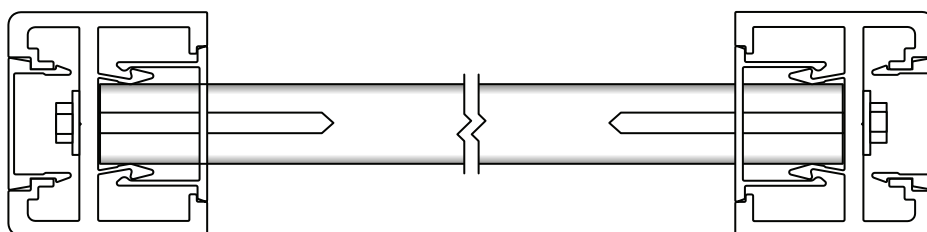


Gate frame screws
12Gx65mm hex flange head
Bag of 17
Order Code:
XP-SCREWSGF-17PK
Use to fix off gate slat



79mm x 30mm nylon packer
UV stabilised nylon
Use with D&D Lokk Latch Deluxe
Order Code:
XP-PACKER
Positions Lokk Latch deluxe for correct alignment when affixing to gate side frame

Plan view of slat assembly into gate side frame

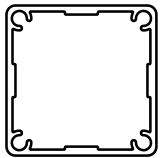
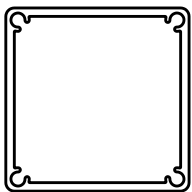


No welding required

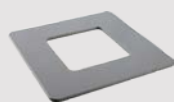
Strategic screws fix into screw fluted 'gate blades' at top, middle and bottom positions. The rest of the standard slats simply push into patented side frame
See 'Gate configurations' page for gate blade positioning

Screening extrusions

Post options

Profile	Description	Length	Code	Colours
	50mm x 50mm full post (2400mm post comes with FREE aluminium flat top cap)	2400mm or 6000mm	XP-2400-FP XP-6000-FP	B, G, M, S, SM, MN
	65mm x 65mm heavy duty full post with 3mm wall thickness (2400mm post comes with FREE aluminium flat top cap)	2400mm or 6000mm	XP-2400-65HD XP-6000-65HD	B, G, M, S, SM, MN

Post accessories



Dress ring

Aluminium
100x100mm
Colours:
B, G, M, S, SM, MN
Order Code:
XP-DR
Suits 50x50mm post



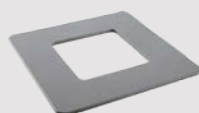
Flat top plate

Aluminium
Colours:
B, G, M, S, SM, MN
Order Code:
XP-TP
*Suits 50x50mm post
Press in fitting*



Base plate set

Aluminium
100x100mm BP
Includes 4x 12Gx75mm CSK screws
Colours:
B, G, M, S, SM, MN
Order Code:
XP-BP-SET
Suits 50x50mm post



Dress ring

Aluminium
115x115mm
Colours:
B, G, M, S, SM, MN
Order Code:
XP-65DR
Suits 65x65mm post



Flat top plate

Aluminium
Colours:
B, G, M, S, SM, MN
Order Code:
XP-65TP
*Suits 65x65mm post
Press in fitting*



Base plate set

Aluminium
115x100mm BP
Includes 4x 12Gx75mm CSK screws
Colours:
B, G, M, S, SM, MN
Order Code:
XP-65BP-SET
Suits 65x65mm post

Misc. accessories



40mm x 20mm side frame mounting arm

Aluminium
200mm long - 2x 100x26mm welded plates
Colours:
B, G, M, S, SM, MN
Order Code:
XP-ARMSF



40mm x 20mm centre support rail mounting arm

Aluminium
192mm long - 2x 100x40mm welded plates (1x vert., 1x horiz.)
SUITS XPRESSCREEN ONLY
Colours:
B, G, M, S, SM, MN
Order Code:
XP-ARMCSR



Slat end cap

UV stabilised nylon
Available in Black or Silver
Order Code:
XP-SLATCAP-B
XP-SLATCAP-S
Suits all 65x16.5mm slats except gate slat



Slat comb

Plastic
Order Code:
XP-TOOL-09 (9mm)
XP-TOOL-20 (20mm)
*Assists with lining up slat for quick side frame assembly
Exact spacing for slat alignment*



Touch up paint

Colours:
B, G, S, SM, MN
Order Code:
PAINT

Cut to size slat screening

In addition to long length supply, we also offer a 'cut to size' program for panels & gates. Simply provide your panel or gate measurements (width & height) and we cut everything to size & flat pack for fast and easy assembly onsite or at your premises. Australia wide delivery available.

With scale of production, pricing on offer is unbeatable.



Huge cost savings

- Transparent pricing charged by lineal metre of slat and side frame used
- No wastage costs to you as only charged for exact metres of slat/side frame used
- Fast turnaround
- Save labour costs by not having to fabricate
- Pedestrian gates available: Non-weld & cut to size



A huge range of choices

- Choose between Xpressscreen or Quickscreen side frames (same slats used for both side frame options)
- Available in pre-powder coated or mill finish
- Select from Monument, Woodland Grey, Surfmist, Satin Black, Palladium Silver powder coat or Mill finish
- Pedestrian gates also available



Delivery Australia wide

Easy transport around Australia being flat packed

Easy ordering process

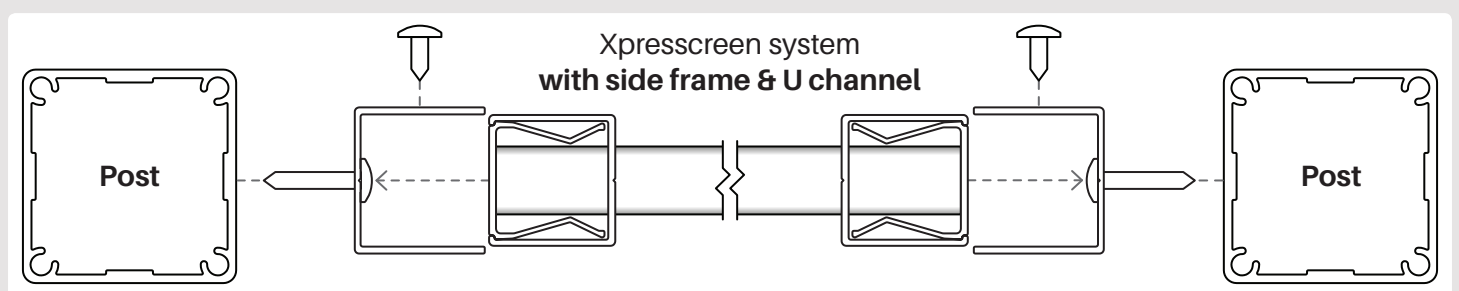
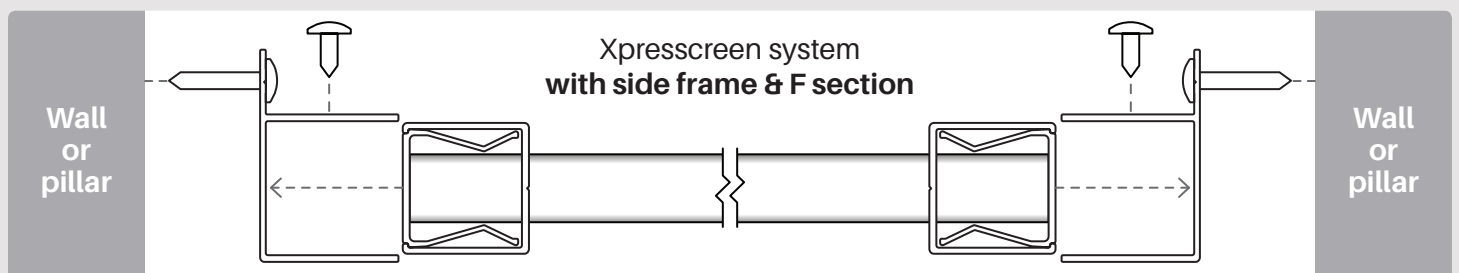
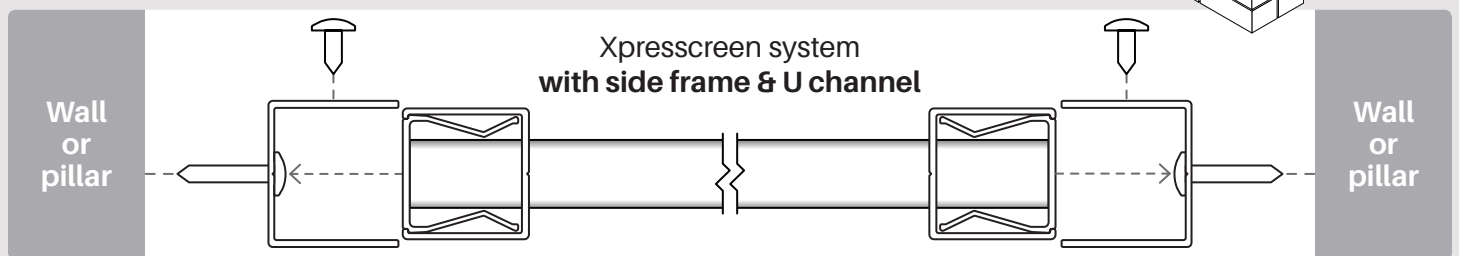
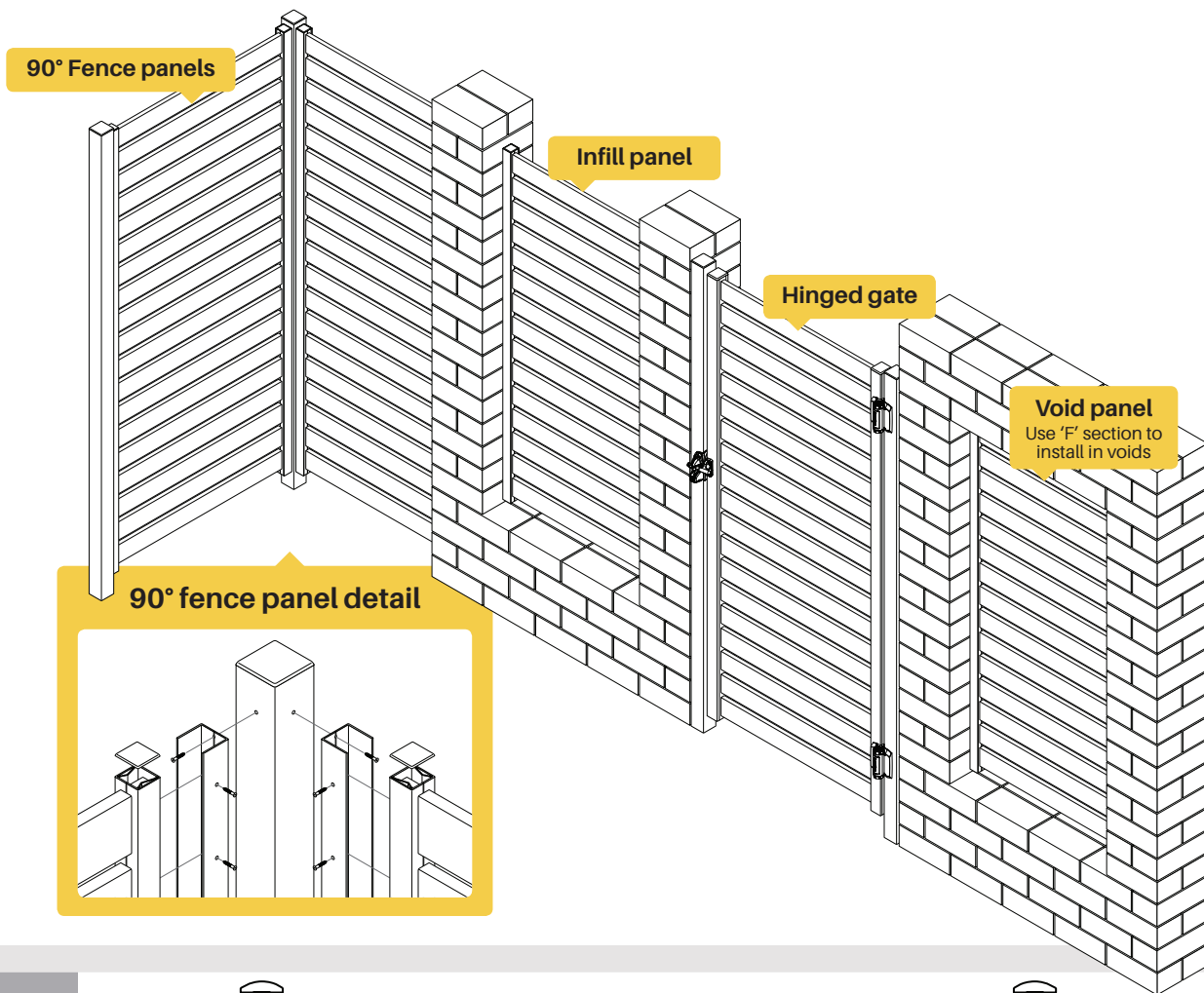
We've made it simple with an easy to use excel order form.

Simply insert widths and height of panels or gates into the order form and the exact lineal meters of slat and side frame is given along with the price.

Contact us and we can email you a copy.

Cut to Size - XPRESS Screens						Select Colour		Slat Spacing	
XPRESS Screens - Cut to Size with 20mm x 27mm Side Frames						Select Colour		Slat Spacing	
Installation Type	Height (m)	Width (m)	Pricing Type	No. of Panels (or Gate Size)	Lineal Meters of Slat	Lineal Meters of Frame			
1	1.8	2.0	Standard	1	3.6	2.0			
2	1.8	2.5	Standard	1	4.5	2.5			
3	1.8	3.0	Standard	1	5.4	3.0			
4	1.8	3.5	Standard	1	6.3	3.5			
5	1.8	4.0	Standard	1	7.2	4.0			
6	1.8	4.5	Standard	1	8.1	4.5			
7	1.8	5.0	Standard	1	9.0	5.0			
8	1.8	5.5	Standard	1	9.9	5.5			
9	1.8	6.0	Standard	1	10.8	6.0			
10	1.8	6.5	Standard	1	11.7	6.5			
11	1.8	7.0	Standard	1	12.6	7.0			
12	1.8	7.5	Standard	1	13.5	7.5			
13	1.8	8.0	Standard	1	14.4	8.0			
14	1.8	8.5	Standard	1	15.3	8.5			
15	1.8	9.0	Standard	1	16.2	9.0			
16	1.8	9.5	Standard	1	17.1	9.5			
17	1.8	10.0	Standard	1	18.0	10.0			
18	1.8	10.5	Standard	1	18.9	10.5			
19	1.8	11.0	Standard	1	19.8	11.0			
20	1.8	11.5	Standard	1	20.7	11.5			
21	1.8	12.0	Standard	1	21.6	12.0			
22	1.8	12.5	Standard	1	22.5	12.5			
23	1.8	13.0	Standard	1	23.4	13.0			
24	1.8	13.5	Standard	1	24.3	13.5			
25	1.8	14.0	Standard	1	25.2	14.0			
26	1.8	14.5	Standard	1	26.1	14.5			
27	1.8	15.0	Standard	1	27.0	15.0			
28	1.8	15.5	Standard	1	27.9	15.5			
29	1.8	16.0	Standard	1	28.8	16.0			
30	1.8	16.5	Standard	1	29.7	16.5			
31	1.8	17.0	Standard	1	30.6	17.0			
32	1.8	17.5	Standard	1	31.5	17.5			
33	1.8	18.0	Standard	1	32.4	18.0			
34	1.8	18.5	Standard	1	33.3	18.5			
35	1.8	19.0	Standard	1	34.2	19.0			
36	1.8	19.5	Standard	1	35.1	19.5			
37	1.8	20.0	Standard	1	36.0	20.0			
38	1.8	20.5	Standard	1	36.9	20.5			
39	1.8	21.0	Standard	1	37.8	21.0			
40	1.8	21.5	Standard	1	38.7	21.5			
41	1.8	22.0	Standard	1	39.6	22.0			
42	1.8	22.5	Standard	1	40.5	22.5			
43	1.8	23.0	Standard	1	41.4	23.0			
44	1.8	23.5	Standard	1	42.3	23.5			
45	1.8	24.0	Standard	1	43.2	24.0			
46	1.8	24.5	Standard	1	44.1	24.5			
47	1.8	25.0	Standard	1	45.0	25.0			
48	1.8	25.5	Standard	1	45.9	25.5			
49	1.8	26.0	Standard	1	46.8	26.0			
50	1.8	26.5	Standard	1	47.7	26.5			
51	1.8	27.0	Standard	1	48.6	27.0			
52	1.8	27.5	Standard	1	49.5	27.5			
53	1.8	28.0	Standard	1	50.4	28.0			
54	1.8	28.5	Standard	1	51.3	28.5			
55	1.8	29.0	Standard	1	52.2	29.0			
56	1.8	29.5	Standard	1	53.1	29.5			
57	1.8	30.0	Standard	1	54.0	30.0			
58	1.8	30.5	Standard	1	54.9	30.5			
59	1.8	31.0	Standard	1	55.8	31.0			
60	1.8	31.5	Standard	1	56.7	31.5			
61	1.8	32.0	Standard	1	57.6	32.0			
62	1.8	32.5	Standard	1	58.5	32.5			
63	1.8	33.0	Standard	1	59.4	33.0			
64	1.8	33.5	Standard	1	60.3	33.5			
65	1.8	34.0	Standard	1	61.2	34.0			
66	1.8	34.5	Standard	1	62.1	34.5			
67	1.8	35.0	Standard	1	63.0	35.0			
68	1.8	35.5	Standard	1	63.9	35.5			
69	1.8	36.0	Standard	1	64.8	36.0			
70	1.8	36.5	Standard	1	65.7	36.5			
71	1.8	37.0	Standard	1	66.6	37.0			
72	1.8	37.5	Standard	1	67.5	37.5			
73	1.8	38.0	Standard	1	68.4	38.0			
74	1.8	38.5	Standard	1	69.3	38.5			
75	1.8	39.0	Standard	1	70.2	39.0			
76	1.8	39.5	Standard	1	71.1	39.5			
77	1.8	40.0	Standard	1	72.0	40.0			
78	1.8	40.5	Standard	1	72.9	40.5			
79	1.8	41.0	Standard	1	73.8	41.0			
80	1.8	41.5	Standard	1	74.7	41.5			
81	1.8	42.0	Standard	1	75.6	42.0			
82	1.8	42.5	Standard	1	76.5	42.5			
83	1.8	43.0	Standard	1	77.4	43.0			
84	1.8	43.5	Standard	1	78.3	43.5			
85	1.8	44.0	Standard	1	79.2	44.0			
86	1.8	44.5	Standard	1	80.1	44.5			
87	1.8	45.0	Standard	1	81.0	45.0			
88	1.8	45.5	Standard	1	81.9	45.5			
89	1.8	46.0	Standard	1	82.8	46.0			
90	1.8	46.5	Standard	1	83.7	46.5			
91	1.8	47.0	Standard	1	84.6	47.0			
92	1.8	47.5	Standard	1	85.5	47.5			
93	1.8	48.0	Standard	1	86.4	48.0			
94	1.8	48.5	Standard	1	87.3	48.5			
95	1.8	49.0	Standard	1	88.2	49.0			
96	1.8	49.5	Standard	1	89.1	49.5			
97	1.8	50.0	Standard	1	90.0	50.0			
98	1.8	50.5	Standard	1	90.9	50.5			
99	1.8	51.0	Standard	1	91.8	51.0			
100	1.8	51.5	Standard	1	92.7	51.5			

Xpressscreen configurations



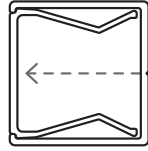
Trade tip: If buying long lengths and cutting on-site, a deduction of 17mm off the overall slat length is required to ensure built frame fits inside U or F section

Xpressscreen panel installation

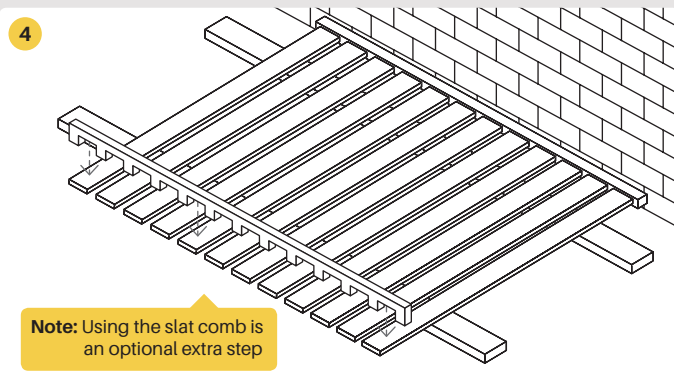
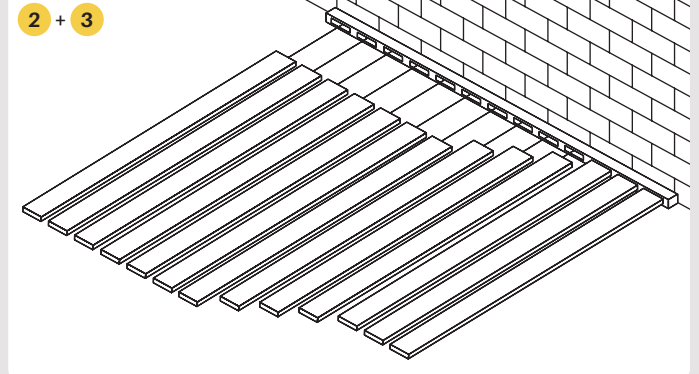
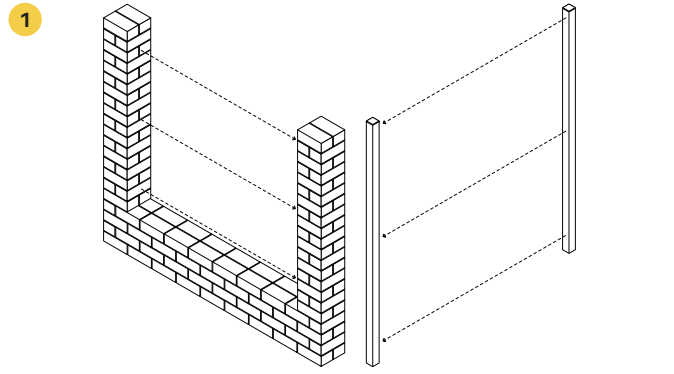
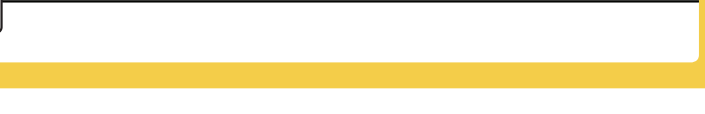
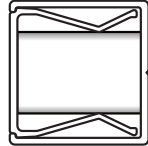
PATENTED EASY XPRESS ASSEMBLY SYSTEM

Patented easy Xpressscreen assembly system

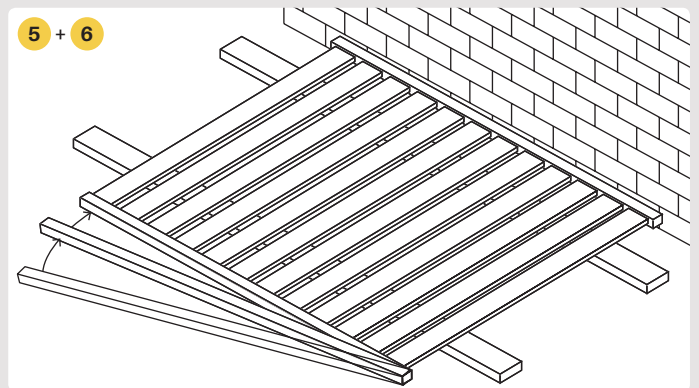
Innovative frame designed to grip each slat ensuring a solid and rattle free panel without the need for welding or screwing.



NO SCREWS OR RIVETS!

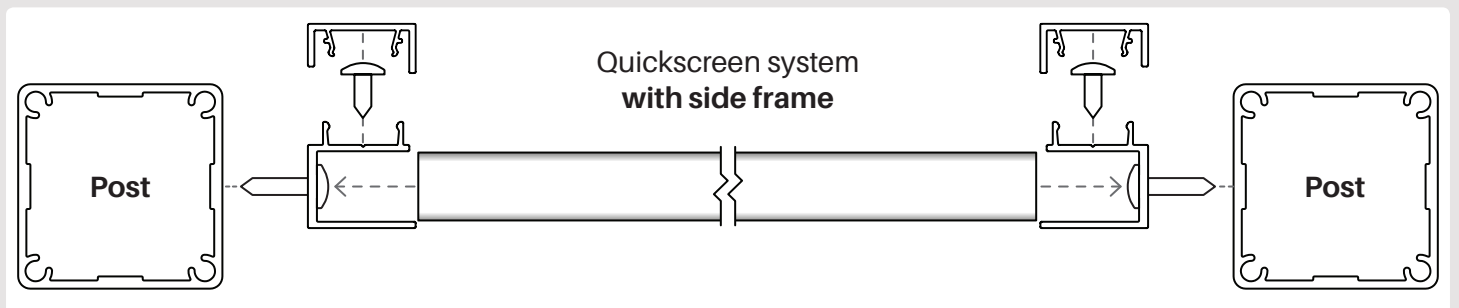
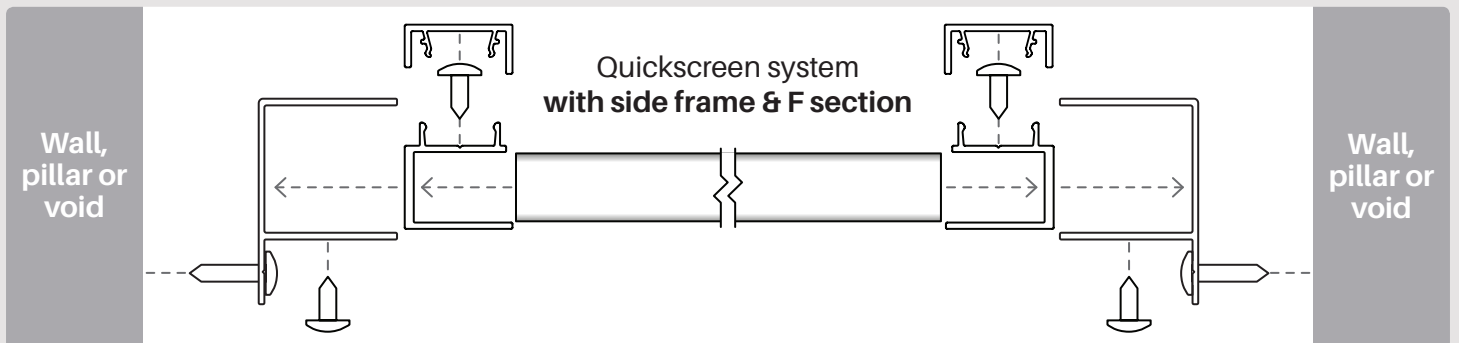
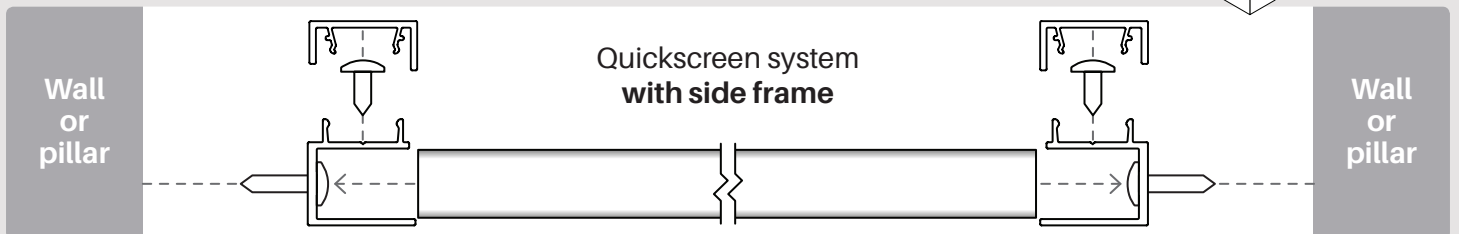
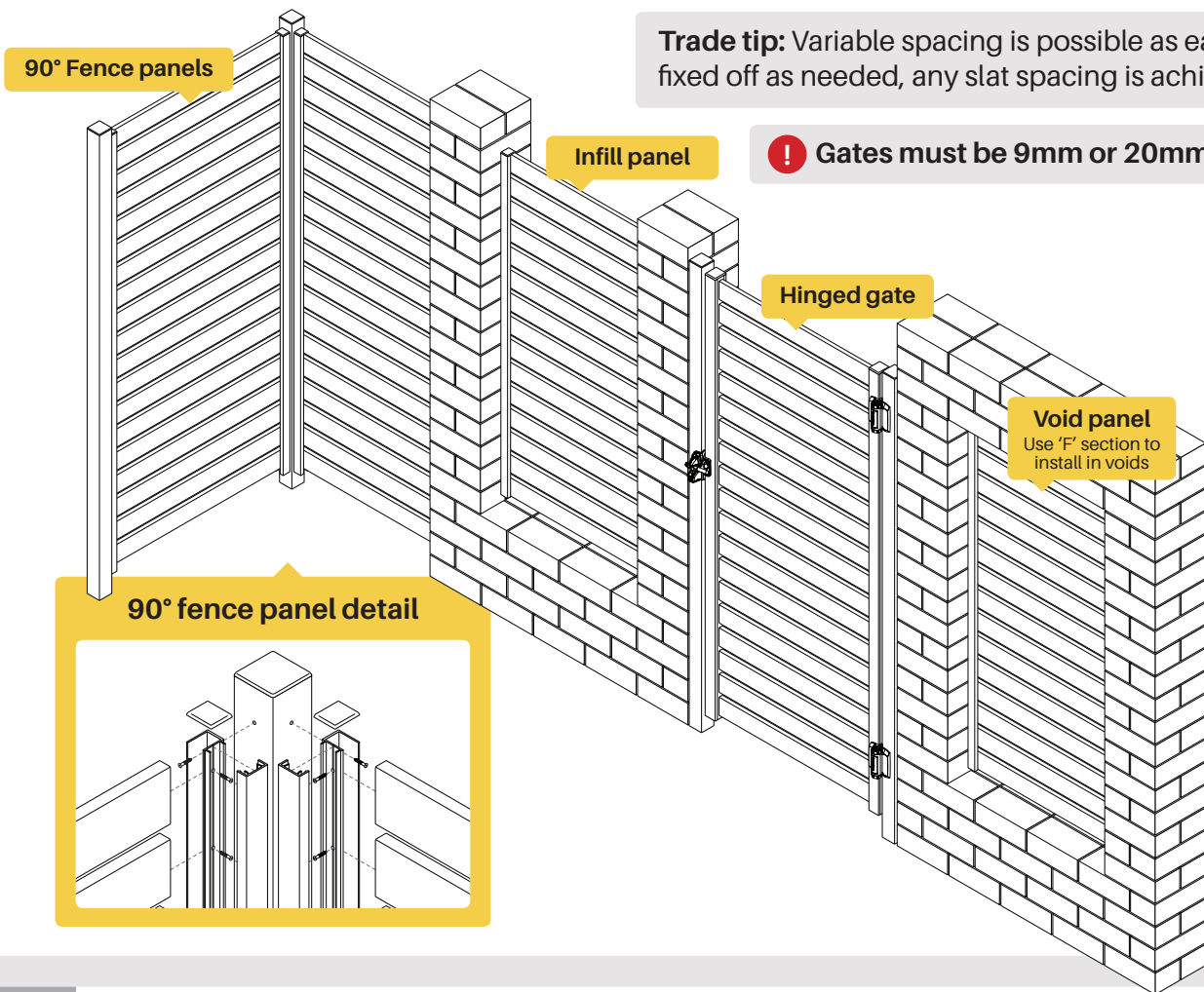


Note: Using the slat comb is an optional extra step

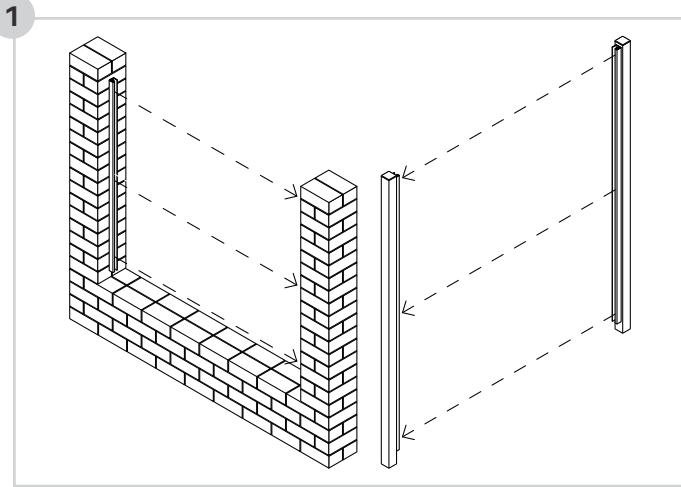


- 1** Take measurement between walls or posts at 3 points: top, middle and bottom (Take note of the smallest measurement)
- 2** Place machined frame on flat surface and insert slats into machined holes in the frame
(Make sure surface is protected from scratching)
- 3** One at a time, push the slats in to the side frame until they are fully engaged
(If necessary, tap the ends of the slats with a rubber mallet to make sure the slats are in as far as possible)
- 4** Elevate slats & side frame on 2 padded bearers. Place the slat comb between slats to prevent any movement of slats in the next step
- 5** Starting from the left side, feed the slats one at a time into the side frame. Slowly rotate the side frame and engage the other slats, one at a time until they are all inserted
(When all slats are engaged, push down along the length of the frame)
- 6** Using the rubber mallet, tap the top of the machined frame along its length, until slats and side frame are fully engaged

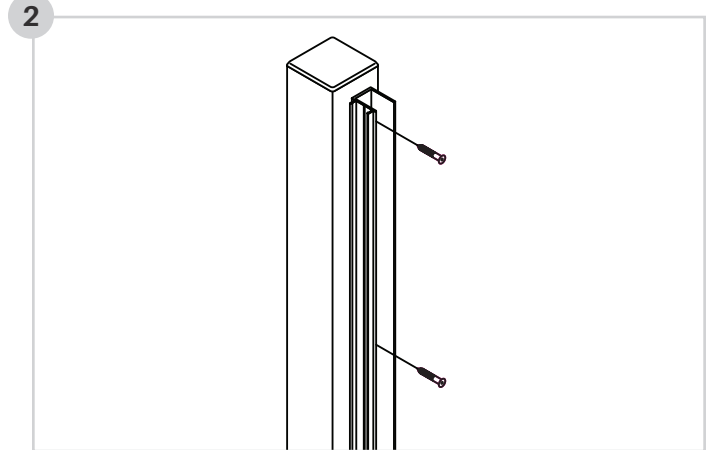
Quickscreen configurations



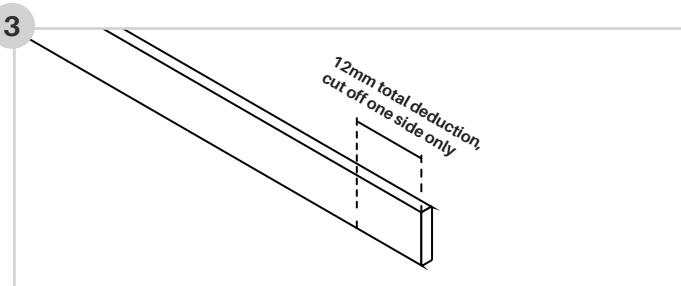
Quickscreen panel installation



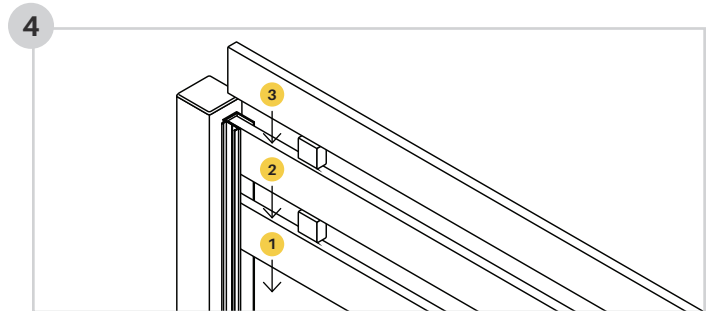
1
Take measurement between walls or posts at 3 points: top, middle and bottom (Take note of the smallest measurement)



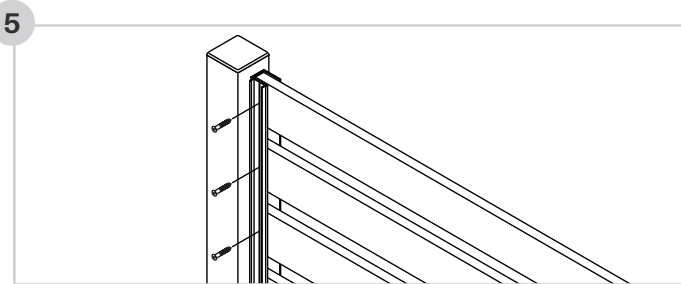
2
Cut side frames 3mm less than desired height (3mm allows for the top cap)
Affix side frames to wall or post with appropriate fixings



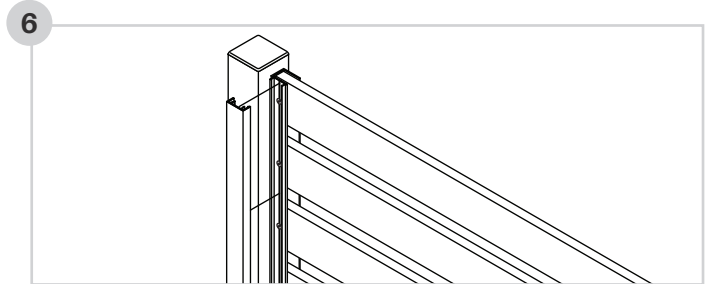
3
Cut aluminium slats 12mm less than total width of opening (Refer to measurement in step 1)
The 12mm deduction takes into account thickness of side frame on both sides of the screen and head of fixings.
Ensure fixings holding side frame do not obstruct slats when dropping in. If so, you may need to trim slats further.



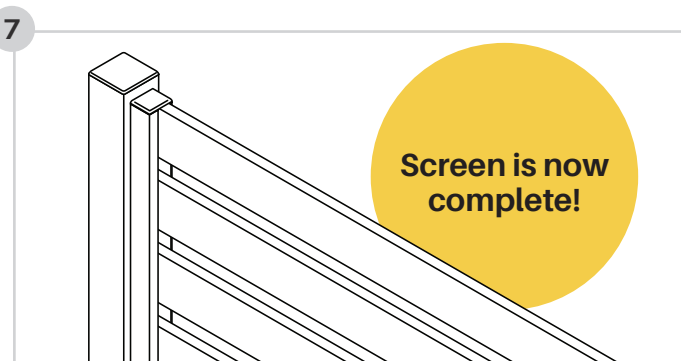
4
Drop in aluminium slats
Tip: Ensure bottom slat is level and screw off at both sides
Optional spacer blocks can be rotated to achieve a 9, 15 or 20mm slat gap. Any gap can be achieved by leaving a desired space. Consider using timber block spacers to achieve other gaps.



5
Screw off each slat as it is dropped in (ensuring each slat is level)
If spacer blocks used, remove after each level is installed.

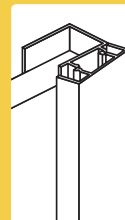


6
Cut snap on fixing cover to appropriate height
Attach snap on fixing cover to hide screws
Tip: If screen is wider than 1800mm, it is recommended to attach the centre support rail vertically at the centre of the screen. Cut centre support rail to appropriate height of screen and screw off to each slat at back side of screen

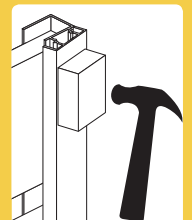


Snap on fixing cover install tip

Engage shorter leg of snap-on cover first.
At this point, the snap-on cover will be sitting off the side frame on an angle.
The longer leg must be at open side of side frame.



Starting from the top and working your way down, use a wood block and a hammer/mallet to tap the longer leg into place.
A short, sharp tap may be required to engage the long leg.

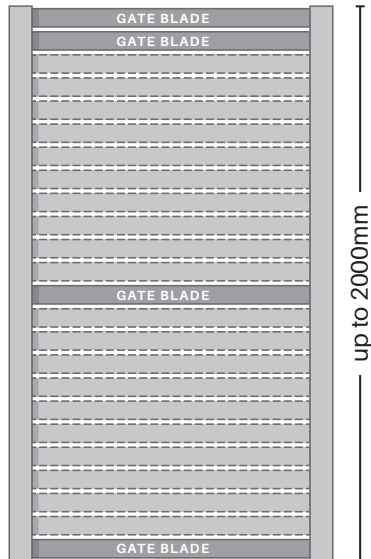


Gate configurations

Refer below for 'gate slat' positioning in conjunction with width & height specifications

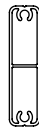
9mm or 20mm slat spacing

Up to 1000mm wide

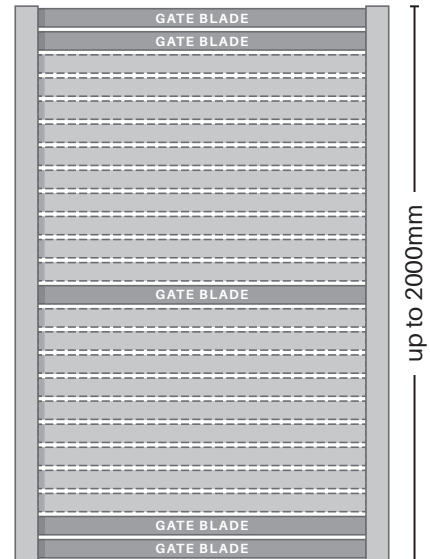


Gate blades:

- 2x top
- 1x middle
- 1x bottom



From 1001mm to 1200mm wide

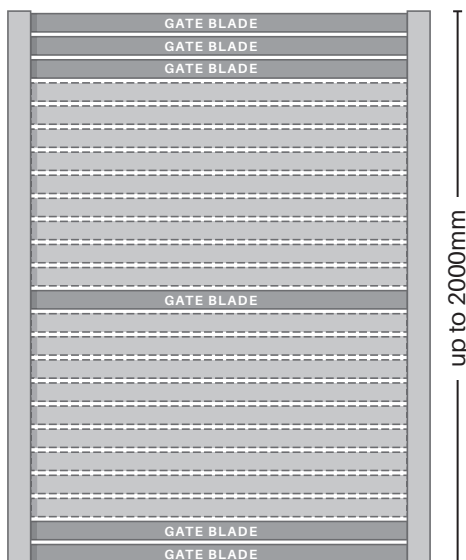


Gate blades:

- 2x top
- 1x middle
- 2x bottom

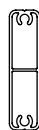


From 1201mm to 1500mm wide

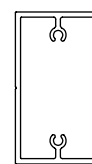
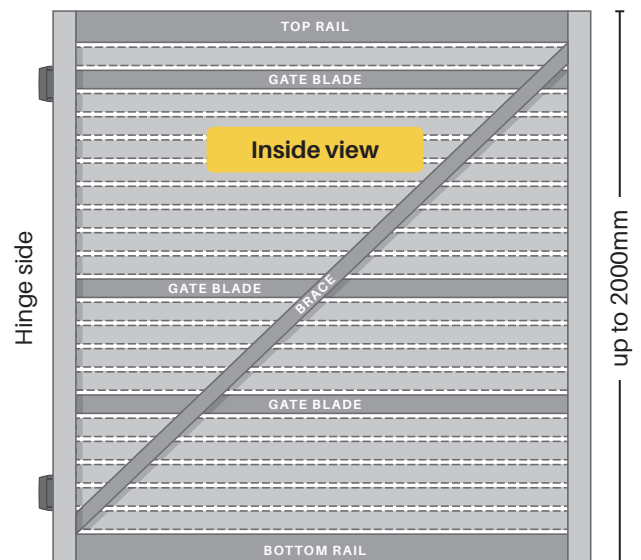


Gate blades:

- 3x top
- 1x middle
- 2x bottom



From 1501mm to 2100mm wide



Gate blades:

- 1x 2nd slat down
- 1x middle
- 1x mid-point between middle and bottom

Top/bottom rail:

- 1x heavy duty top rail
- 1x heavy duty bottom rail

Brace:

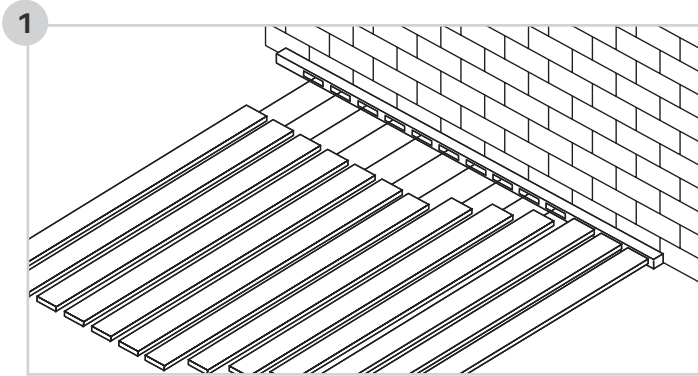
- 1x centre support rail (Diagonal)

Coming soon!

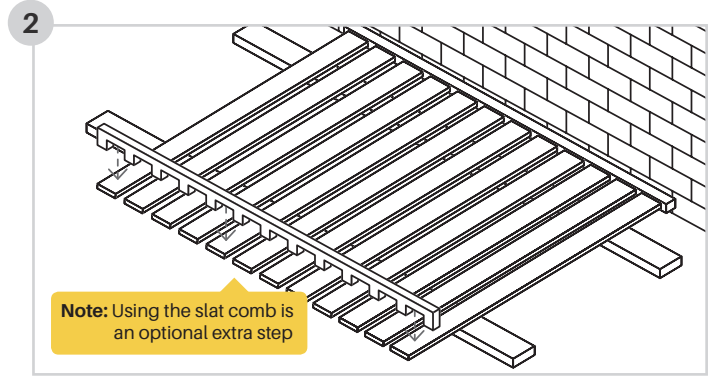
Patented non-weld lock box

Stay tuned for more info!

Gate assembly

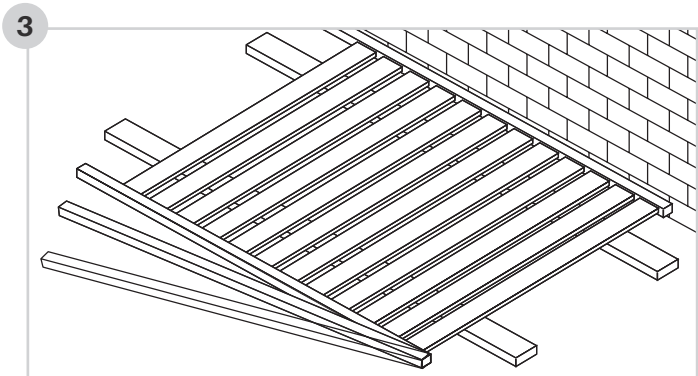


On a flat protected surface, lay 1x gate side frame with slotted spacer infill and rest against a padded stop and tap slats and gate blades into place



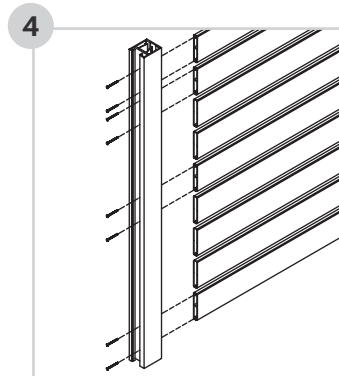
Note: Using the slat comb is an optional extra step

Elevate the slats and gate side frame on two padded bearers to allow the second gate side frame to be attached
Place the slat comb between all slats to prevent any movement of slats in the next step

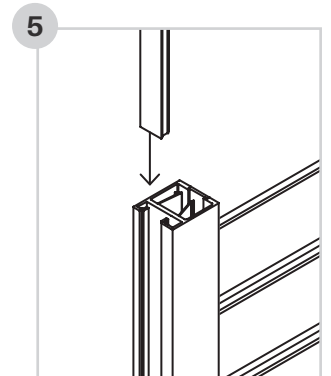


Engage the second gate side frame to the slats and tap the frame until all the slats are fully engaged

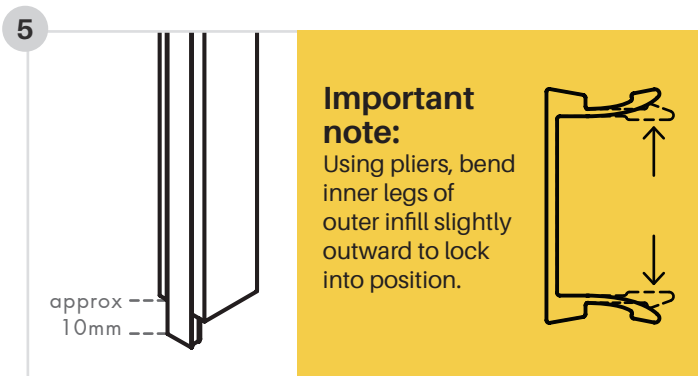
TIP: Start at one end and work slats in from one end to the other



Screw off gate blades at required positions. Ensure gate is square by measuring diagonals

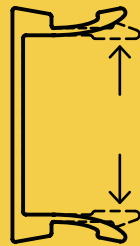


Slide the 2x outer infills down into position to hide screw heads



Important note:

Using pliers, bend inner legs of outer infill slightly outward to lock into position.

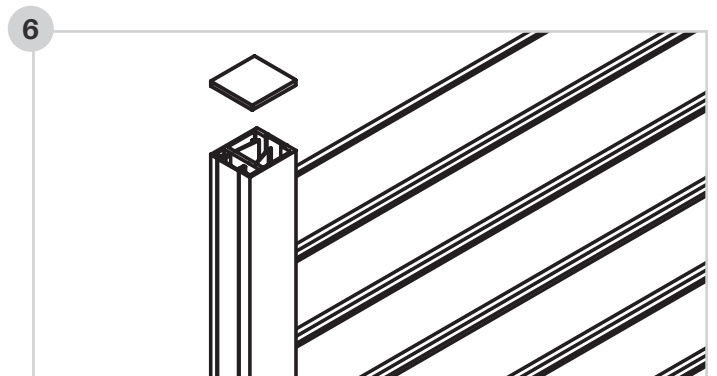


approx 10mm

Slide 2x outer infills past end of gate side frame (approx. 10mm), then using pliers, bend inner legs of outer infill slightly outwards.

Tap outer infill back to level with gate side frame

This step is required to stop the outer infill from sliding down prior to hardware installation



Insert top caps into side frames

To determine the actual slat width for your gate, make a deduction of 36mm to the overall gate width (outer edge to outer edge of gate side frame)

FORMULA: **OVERALL GATE WIDTH - 36MM**
for slat width

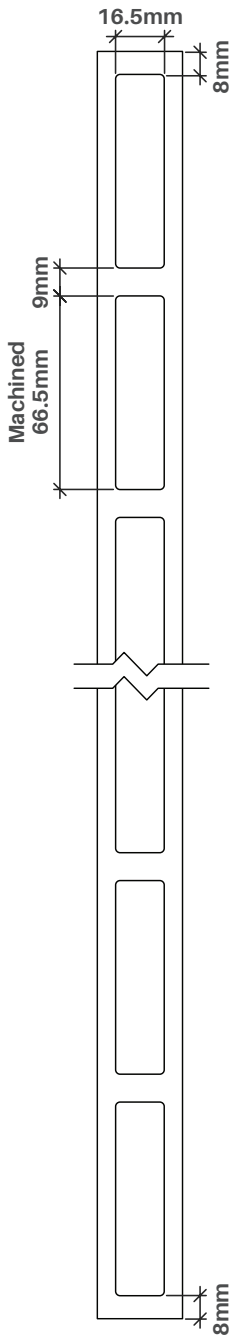
You need to allow for hinge and latch gaps

Check hinge and latch hardware specifications for gaps required and take this information into account when determining overall gate width

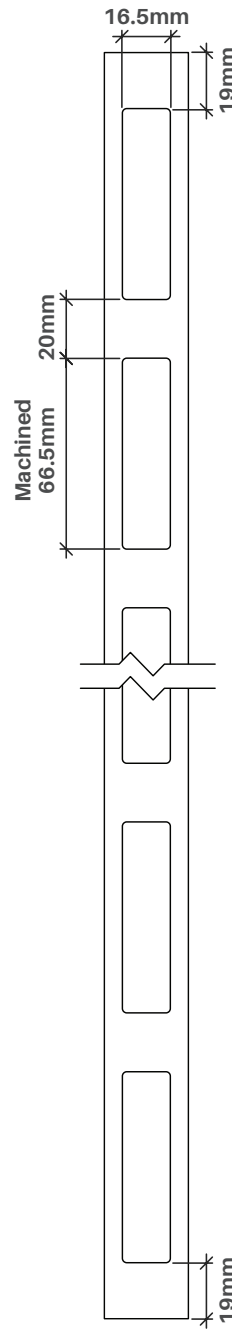
Screening spacings

Xpresscreens 9mm spacing

Xpresscreens 20mm spacing



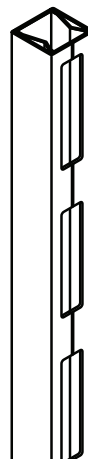
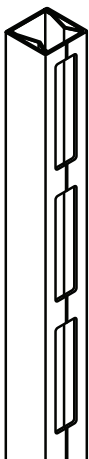
Height	# Blades
309mm	4
384mm	5
458mm	6
533mm	7
607mm	8
682mm	9
756mm	10
831mm	11
905mm	12
980mm	13
1054mm	14
1129mm	15
1203mm	16
1278mm	17
1352mm	18
1427mm	19
1501mm	20
1576mm	21
1650mm	22
1725mm	23
1799mm	24
1874mm	25
1948mm	26
2023mm	27
2097mm	28
2172mm	29
2246mm	30
2321mm	31
2395mm	32
2470mm	33
2544mm	34
2619mm	35
2693mm	36
2768mm	37
2842mm	38
2917mm	39
2991mm	40
3066mm	41
3140mm	42



Height	# Blades
369mm	4
456mm	5
542mm	6
629mm	7
715mm	8
802mm	9
888mm	10
975mm	11
1061mm	12
1148mm	13
1234mm	14
1321mm	15
1407mm	16
1494mm	17
1580mm	18
1667mm	19
1753mm	20
1840mm	21
1926mm	22
2013mm	23
2099mm	24
2186mm	25
2272mm	26
2359mm	27
2445mm	28
2532mm	29
2618mm	30
2705mm	31
2791mm	32
2878mm	33
2964mm	34
3051mm	35
3137mm	36
3224mm	37
3310mm	38
3397mm	39
3483mm	40
3570mm	41
3656mm	42

*Advised heights include 3mm thick top cap

*Advised heights include 3mm thick top cap



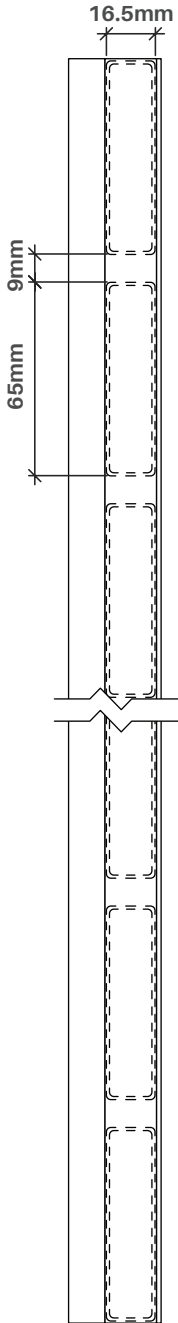
Screening spacings

The Quickscreen & Alumawood side frames allow for variable gap spacing as each slat is fixed off at desired position. Any gap is achievable. Below are specifications for the popular spacings of 9mm and 20mm.

The formula to calculate variable gap screen height is: $((65\text{mm (slat height)} + \text{desired gap}) \times \text{number of slats}) - \text{desired gap} + 3\text{mm (for top cap)}$

For example, a 30mm desired gap with 14 slats: $(65 + 30) \times 14 - 30 + 3 = 1303\text{mm high}$

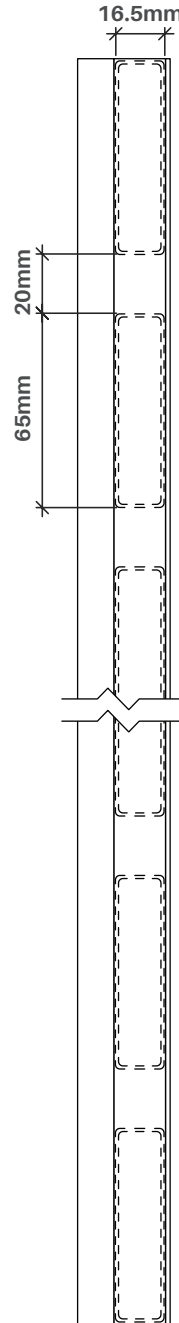
Quickscreen & Alumawood 9mm spacing



Height	# Blades
290mm	4
364mm	5
438mm	6
512mm	7
586mm	8
660mm	9
734mm	10
808mm	11
882mm	12
956mm	13
1030mm	14
1104mm	15
1178mm	16
1252mm	17
1326mm	18
1400mm	19
1474mm	20
1548mm	21
1622mm	22
1696mm	23
1770mm	24
1844mm	25
1918mm	26
1992mm	27
2066mm	28
2140mm	29
2214mm	30
2288mm	31
2362mm	32
2436mm	33
2510mm	34
2584mm	35
2658mm	36
2732mm	37
2806mm	38
2880mm	39
2954mm	40
3028mm	41
3102mm	42

*Advised heights include 3mm thick top cap

Quickscreen & Alumawood 20mm spacing

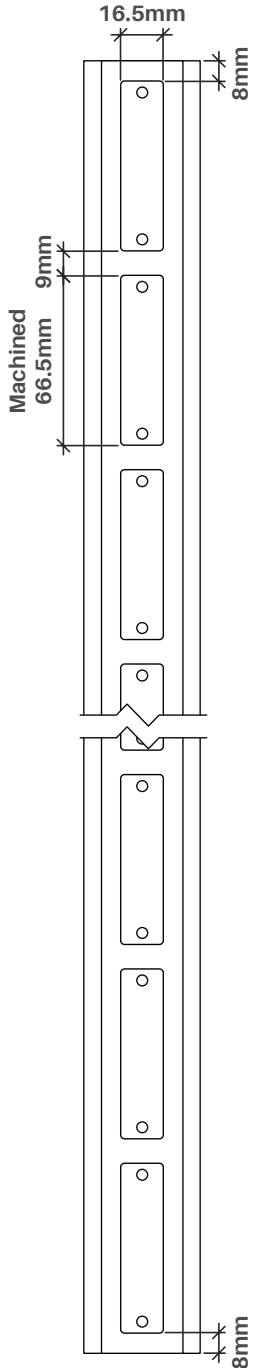


Height	# Blades
323mm	4
408mm	5
493mm	6
578mm	7
663mm	8
748mm	9
833mm	10
918mm	11
1003mm	12
1088mm	13
1173mm	14
1258mm	15
1343mm	16
1428mm	17
1513mm	18
1598mm	19
1683mm	20
1768mm	21
1853mm	22
1938mm	23
2023mm	24
2108mm	25
2193mm	26
2278mm	27
2363mm	28
2448mm	29
2533mm	30
2618mm	31
2703mm	32
2788mm	33
2873mm	34
2958mm	35
3043mm	36
3128mm	37
3213mm	38
3298mm	39
3383mm	40
3468mm	41
3553mm	42

*Advised heights include 3mm thick top cap

Gate screening spacings

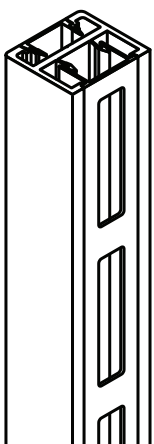
Xpresscreens & Quickscreen gates with **9mm spacing**



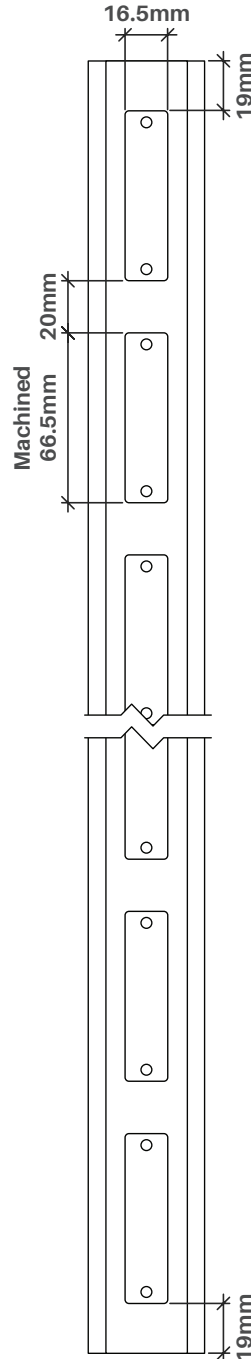
Height	# Blades
309mm	4
384mm	5
458mm	6
533mm	7
607mm	8
682mm	9
756mm	10
831mm	11
905mm	12
980mm	13
1054mm	14
1129mm	15
1203mm	16
1278mm	17
1352mm	18
1427mm	19
1501mm	20
1576mm	21
1650mm	22
1725mm	23
1799mm	24
1874mm	25
1948mm	26
2023mm	27
2097mm	28

*Advised heights include 3mm thick top cap

Gate side frames come with precision drilled holes along the entire extrusion length so gate blade can be affixed at any position



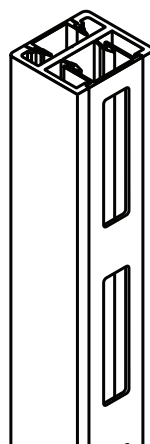
Xpresscreens & Quickscreen gates with **20mm spacing**



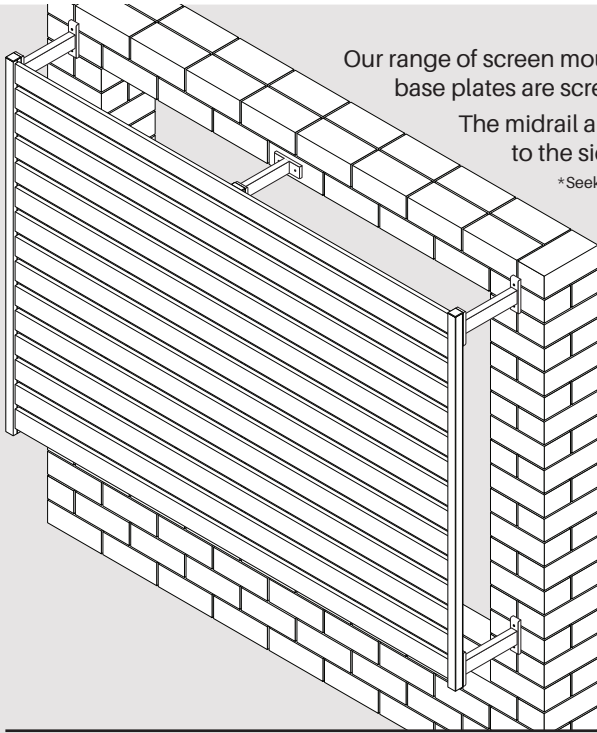
Height	# Blades
369	4
456	5
542	6
629	7
715	8
802	9
888	10
975	11
1061	12
1148	13
1234	14
1321	15
1407	16
1494	17
1580	18
1667	19
1753	20
1840	21
1926	22
2013	23
2099	24

*Advised heights include 3mm thick top cap

Gate side frames come with precision drilled holes along the entire extrusion length so gate blade can be affixed at any position



Mounting arm specifications



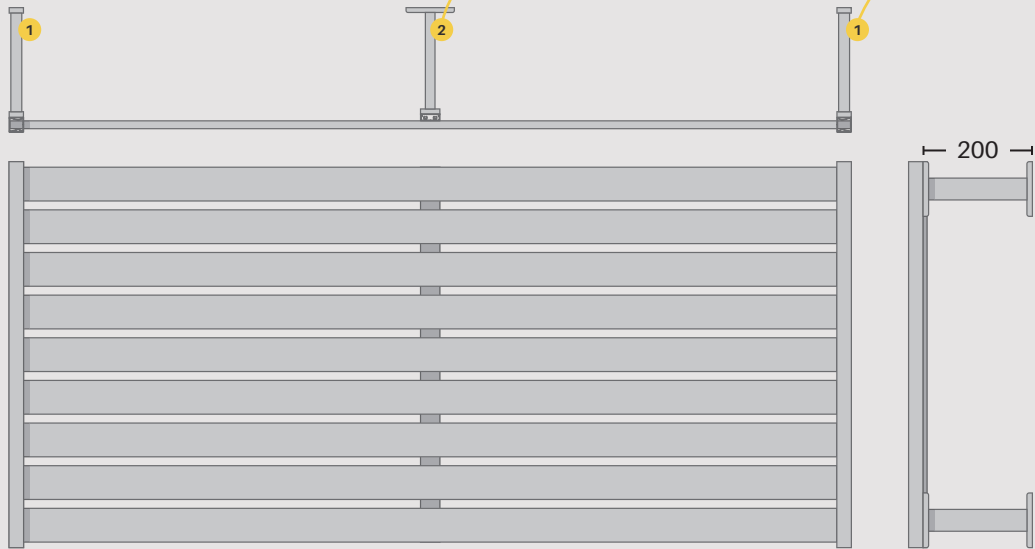
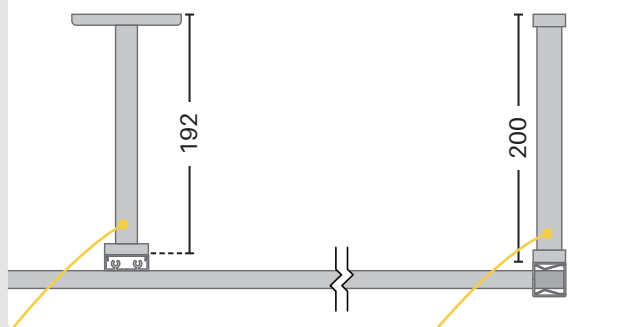
Our range of screen mounting arms are available in mill finish and powder coated finishes. The base plates are screwed into a sturdy 40x20mm extrusion and welded for extra strength.

The midrail arm is slightly shorter due to the centre support rail being a different size to the side frame.

*Seek independent engineering advice as to suitability of arms as each installation is location specific

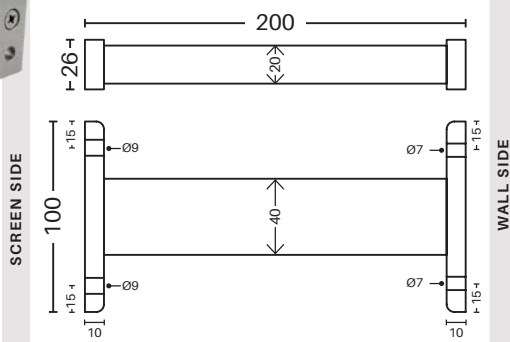
*Wall fixing plate for centre support rail is rotated horizontally for ease of installation. A vertically positioned wall plate is often inconvenient as the bottom section of base plate may hang into the opening

Mounting arm detail



Side frame mounting arm

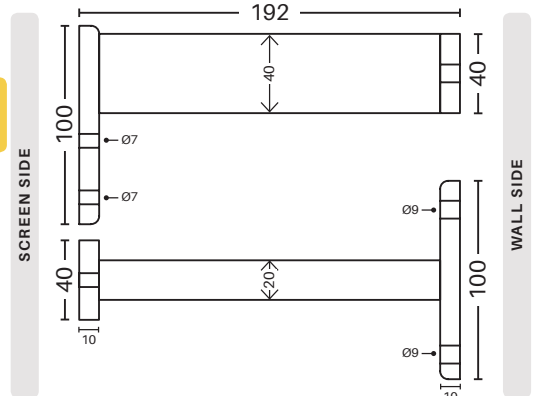
Aluminium - Welded
Colours: B, G, M, S, SM, MN
Order Code: [XP-ARMSF](#)



Centre support rail mounting arm

Aluminium - Welded
Colours: B, G, M, S, SM, MN
Order Code: [XP-ARMCSR](#)

Must be used with Xpresscreen centre support rail



Technical info

Trade tip for Xpressscreen assembly!

Once screens are assembled, there may be a need to 'lock off' the side frame so there is no chance of movement.

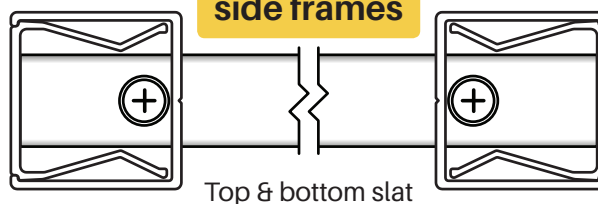
This may be particularly important when:

- Mill screens are assembled requiring powder coating (whereby screens may be hanging from hooks or similar)
- Screens are assembled which may require lifting to heights and it is important there is no chance of side frame detachment during lifts.

A quick and easy solution to avoid movement is to screw off the top & bottom slat (left & right side) with a pan head screw.

These 4 screws are hidden and ensure the side frames cannot move from their position.

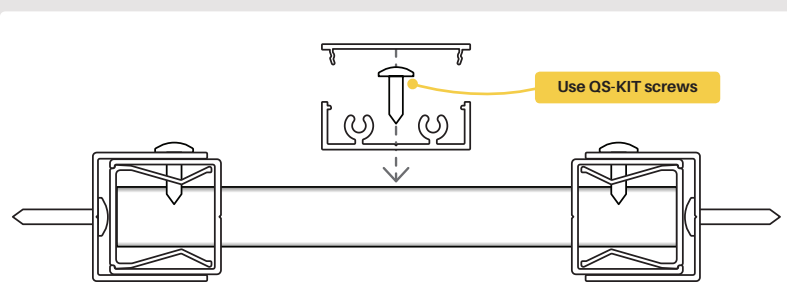
Locking off side frames



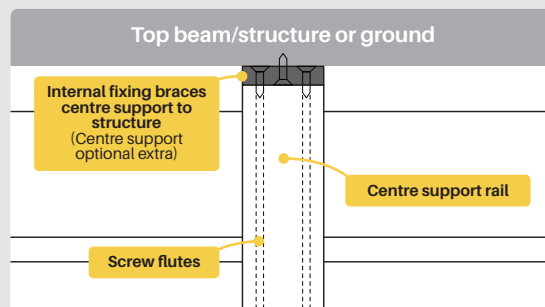
Top & bottom slat

Centre support rail

The centre support rail should be used for slat screening panels wider than 1800mm



Use QS-KIT screws



Top beam/structure or ground

Internal fixing braces centre support to structure (Centre support optional extra)

Centre support rail

Screw flutes

Trade tip: Centre support rail can be braced at top and/or bottom with internal fixing (sold separately)

Queensland

Brisbane

📞 **07 3267 7968**

📠 **07 3267 8199**

✉️ salesbris@glassoutlet.com.au

📍 Building 9A, 153 St Vincents Rd
Virginia, QLD 4014

Gold Coast

📞 **07 5594 0343**

📠 **07 5594 0157**

✉️ salesgc@glassoutlet.com.au

📍 28 Barnett Place
Molendinar, QLD 4214

Victoria

Melbourne North

📞 **03 9308 9111**

📠 **03 9305 1222**

✉️ salessim@glassoutlet.com.au

📍 27 Encore Ave
Somerton, VIC 3062

Melbourne South East

📞 **03 8768 7232**

📠 **03 8768 7235**

✉️ salesdan@glassoutlet.com.au

📍 2/297-301 Abbots Rd
Dandenong South, VIC 3175

South Australia

Adelaide

📞 **08 8359 4048**

📠 **08 8162 5537**

✉️ salesadl@glassoutlet.com.au

📍 5/550 Churchill Rd
Kilburn, SA 5085

**GUARANTEED
SUPERIOR QUALITY**
AT AUSTRALIA'S
LOWEST PRICES